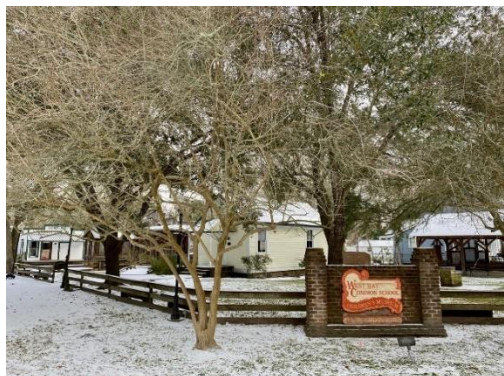




West Bay Common School
Children's Museum



Snowy Day - February 15, 2021



From The President

I hope this finds everyone safe and warm. Been seeing lots of Robins around,..... looking forward to spring. Plans have slowed down due to the cold weather. Cold did not deter the League City Historical Society Board from meeting Saturday, January 16th, as was seen in January's newsletter, which was totally off the chart. Keep up the good work. Thanks to Diana for a great job on the newsletter. Grand ideas and future plans are being made by your Board of Directors.

Congrats to Mike and Dee Peterson for approval from League City Council for Lelia Southern Setting SUP.

Thanks to Melodey Hauch (former LCHS Board member) for getting approval for another Historical Marker for Fairview Cemetery. The new marker will be placed in the Japanese section. Once again, League City is continuing to make history.

Don't forget to send in your dues and donations.

Thank you League City Historical Society for all your support.

God Bless, FAITH AND SERVICE

Doug McKee, President

League City Historical Society

210 N Kansas Ave. League City, TX 77573

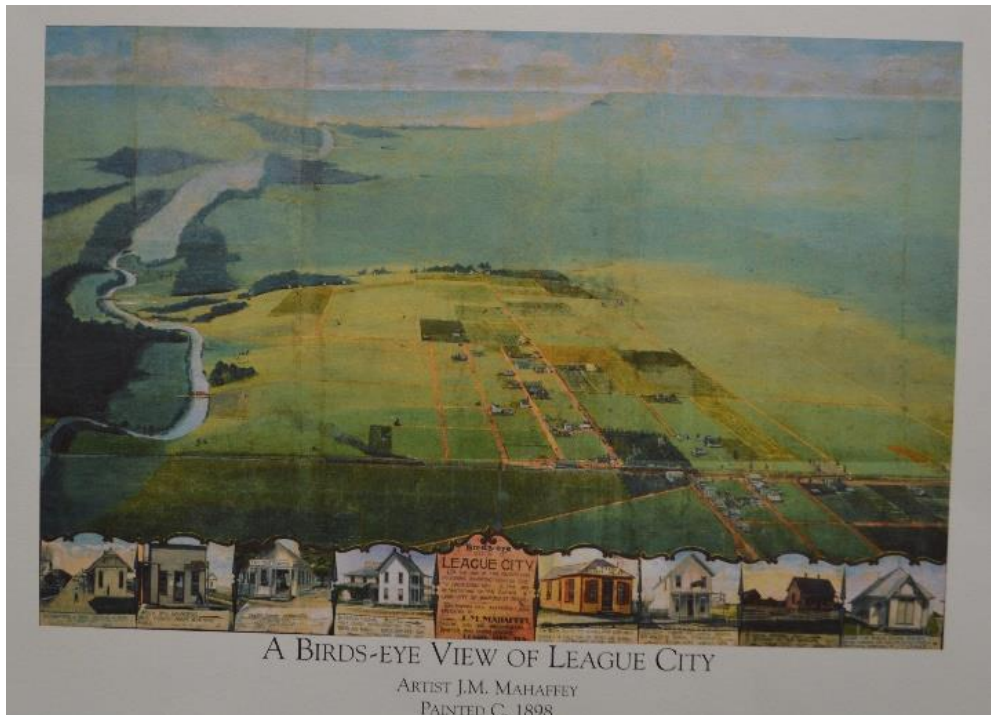
713-829-1073

A BIRDS-EYE VIEW OF LEAGUE CITY

By Joyce Zongrone

Tucked away in Helen Hall Library's Local History Room, is the gem of League City. The 6-by-4-foot, 123-year-old wall hanging, painted on handkerchief cotton, portrays "League City (at the age of two years) and adjoining county." *Birds-eye view of League City* was envisioned and created by "house, sign and ornamental and paper hanger," J.M. Mahaffey in 1898.

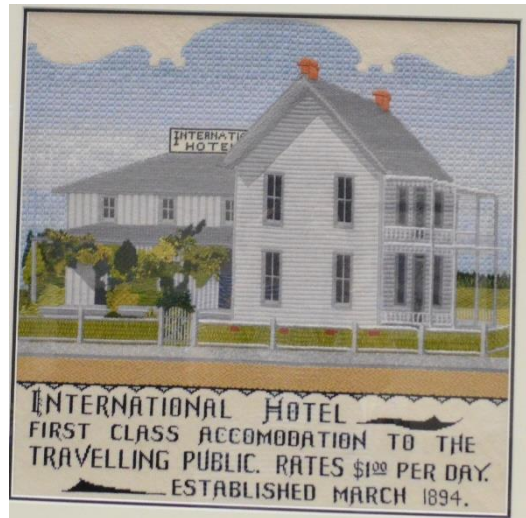
At the turn of the 19th century, Americans were caught up in a fervor for representations of nationalistic life depicting commerce and civic pride. Although very little is known about the artist, Mahaffey, it can be surmised that, he too, was swept up in the tide of pride which he depicted through the minute details in his painting. He showed a panoramic view of League City, the southern shore of Clear Lake and the adjoining county east of the city. At the bottom of his work, he created panels depicting buildings significant to everyday life in the city: the railroad depot, the home of the proprietor of the meat market, the local newspaper, the hotel, the public school and the dry goods, grocery and general stores.



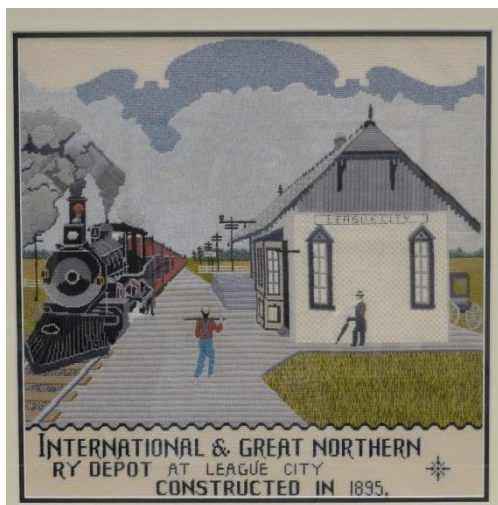
Above: The painting, "A Bird-eye View of League City" which hangs in Helen Hall Library's Local History Room. Story continued on next page.

(A Birds Eye View of League City) - continued.

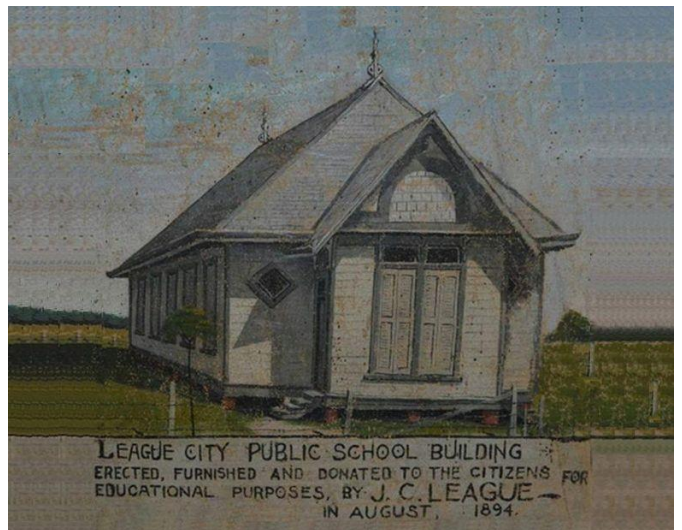
Specific details surrounding the painting's provenance aren't clear. It hung in the League City State Bank in the 1930s, disappearing in the 1940s. In 1956, two League City women, twins Verna Harris and Vera Harper, painted a copy of the "newly discovered work," which hung in City Hall. In June 2000, Caroline Atkinson d'Etchegoyen, a former resident of League City, donated the original "Birds-Eye View of League City" to Helen Hall Library. However, the fragile original was quickly deteriorating, so in the summer of 2001, local history specialist, Heather Campbell, transported it to Frederick, Maryland, to the nationally renowned painting conservator, Nancy Pollak.



The International Hotel



Railroad Depot



League City Public School Building

(Continued on next page)

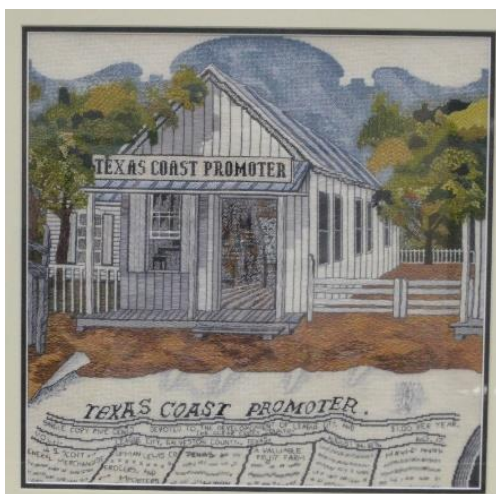
(A Birds Eye View of League City) – continued.

During the year she spent restoring the painting, Nancy faced several challenges, the biggest of which was recreating the missing upper left corner of the painting, previously removed by a clean cut, almost as if it was souvenired. She extrapolated the lost section, using historical maps, replacing it with a lighter synthetic fabric, creating a piece matching the aged original fabric.

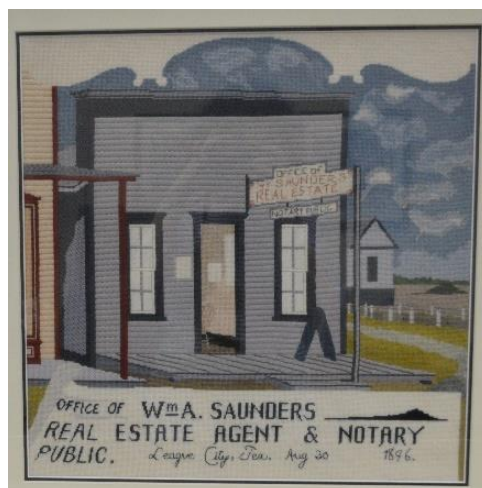
Her experience, she said “was very unique and wonderful and a pleasure.”

Among Pollak’s restorations are painted flags of the Civil War and a small section of the inner liner of General George Washington’s tent at the American Revolutionary War Battle of Yorktown in 1781.

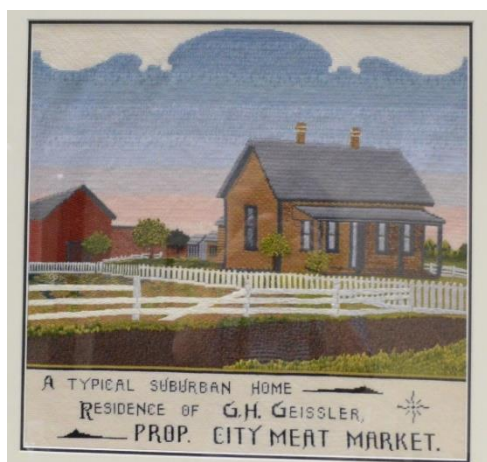
In October of 2002, *Birds-Eye View* came back to its birthplace and found a permanent home, ending its journey in the Helen Hall Library.



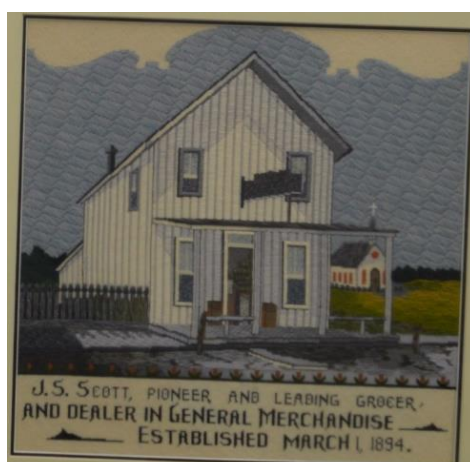
Local Newspaper – Texas Coast Promoter



Saunders Real Estate Office



Residence of G. H. Geissler
owner of City Meat Market



The General Store

(continued on next page)

(A Birds Eye View of League City) - continued.

Below is a picture of "A Birds-Eye View of League City" before restoration.



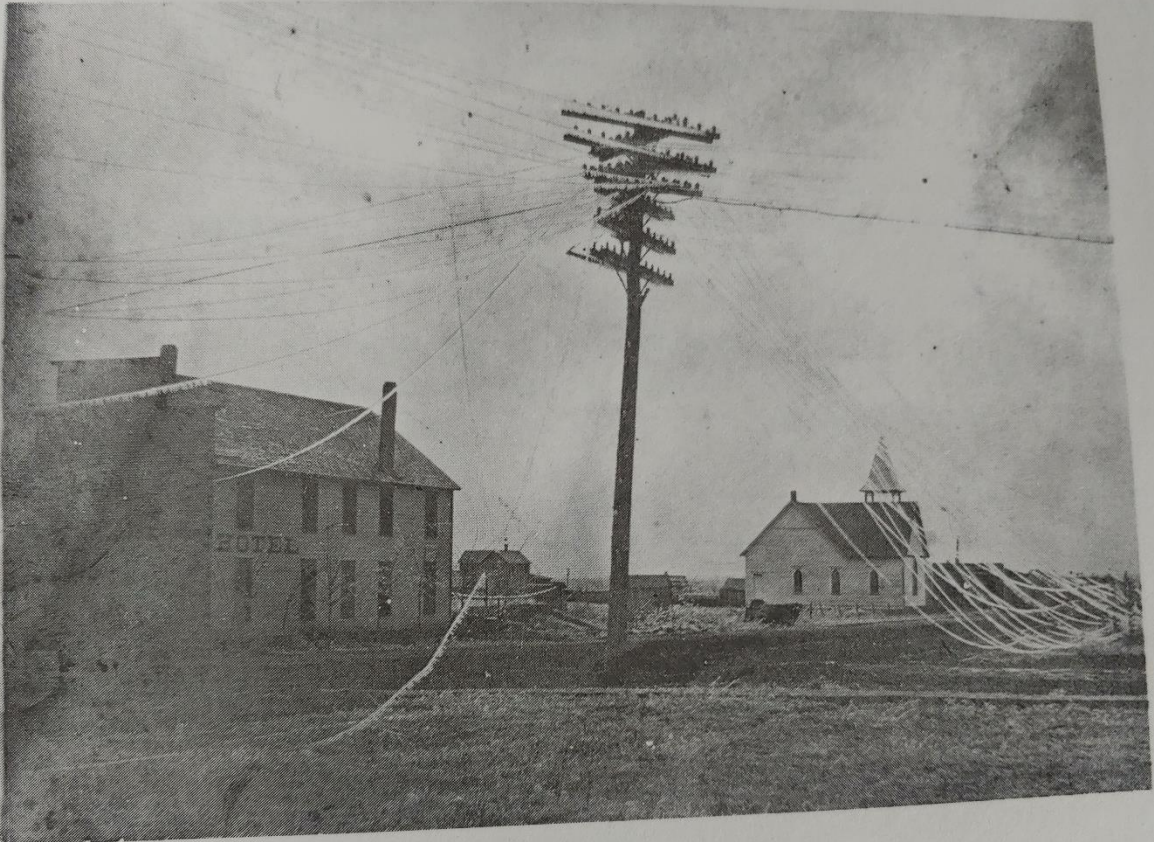
The restored painting was returned to League City in October 2002.



Above: "A Birds-Eye View of League City" displayed at a reception in 2002.

Snow and Ice Storms In Early 1900's

Snow and ice in the gulf coast region of Texas is not a common sight. Below is a picture taken from a book entitled "LEAGUE CITY – A HISTORY FROM IT'S BEGINNING TO 1912, " by the League City Historical Committee. " In looking through the book it seems that during the period 1909 to 1912 there were several snow and ice storms. The picture below shows 1909 and we know from other references that an even bigger freeze came in 1912 and killed nearly all the Satsuma Orange Trees and beautiful orange orchards.



League City Winter, c. December, 1909
Hotel to the left with ice on the
telephone lines. (Photo courtesy of
H. H. Medsger)

(Snow and Ice Storms In Early 1900's) - continued.



Pictured left and below:
Walker Street Scenes, c. 1910
Photos courtesy of Margaret Hynes.



The above picture and the picture to the right were both shown in the book "League City – A History From It's Beginning to 1912". The scenes clearly show that there were some snowy days in League City during that period of time.

As we have recently experienced.....the Texas Gulf Coast can have severe winter weather.



Icicles and ice on the fountain at League Park.



Stanzie Seshar and Gabrielle Nonmacher walking their dogs by WBCS during the snowy February day last week.

A LITTLE COLD SNAP



Your museum has had a special *Hurricane Preparedness Kit* for nearly 25 years and have used it 2-3 times as the need arose. During the last two decades that we have been open, we have never had a winter weather event nearly this severe and the simple preparations (dripping faucets, blanket over exposed pipe, etc) always worked for us. This past week we watched the weather predictions of “36 hours of below freezing”, “prepare for a 17 degree hard freeze tonight” and started to think more was needed than SIMPLE preparations.

As you may know most of the freeze protection items were already sold out, so we had to be creative with what was still in the stores (or our homes). Of course we were going to drip the faucets, but in order to protect the plumbing at the well pump, in the outhouse and barn museum we HAD to create some heat sources. Our pipes have always had the foam pipe wrap so we were mainly dealing with a creating a little heat. We decided to go with incandescent light bulbs for the well pump house and the back part of the outhouse. The back of the outhouse has two regular electrical outlets like your house. Since we were going to use 6 one-hundred watt light bulbs, we needed to multiply our electrical resources a little so we used the following readily available item:



We then had to make light bulbs fit into plugs and there just happen to be 37 of this little item at Lowe's:



We put two bulbs in the end a simple lightweight household extension cord and two more in the “wall plug” multiplier and along with the existing ceiling light, we just created 5 heat sources in the back of the outhouse.



We installed one more light bulb on the end of the museums 100 foot extension cord in the well pump house and we were in business. Or, so we thought. The loss of electricity didn't help any with our plans, but when it was all over we actually experienced 16 degrees and only a small crack in one pipe above the sink where the slow leak ended up going down the drain.

We will fix that soon.

And we now have a *Freeze Prevention Kit*.

A cardboard box, trash bag, blanket and two bricks to help protect the pipe as it comes from the ground to the building.





Arleigh Templeton and Courtney Groce at the Groce dairy on Calder Road. (Photo courtesy of L. C. Groce)

Left: Another snowy day picture! This photograph is shown in the book "League City, A History From 1913 to 1924," by the League City Historical Committee. The photo was taken in 1914 at the Courtney Groce Dairy on Calder Road in League City.



League City Historical Society

2021 Officers

Doug McKee	President
Richard Lewis	Vice President
Amber Murphy	Secretary
Katie Benoit Hake	Treasurer

2021 Directors

Diana Dornak	Director
Deborah Gammon	Director
Helen Hodges	Director
Darryl Krogman	Director
Catharin Lewis	Director
Linda Michael	Director
Michael Peterson	Director
Susan Pierce	Director
Ronnie Richards	Director



DUES

Thanks to all who paid their dues this past month. They continue to come in online and in the post office box. We appreciate our members so much!!!

If you haven't paid your dues yet or you are not a memberwe would love for you to join! Dues can be paid by mailing the membership form in this newsletter and a check to: LCHS, P. O. Box 1642, League City, Tx. 77574 or you can go online to our website and pay with a credit card. leaguecityhistory.org



If You Are Not A Member, We Are Hoping You Will Join!!

League City Historical Society

Thank you for being a member. The various types of memberships with the associated dues are listed below. To renew your membership or become a new member, select the membership level that is best for you, complete the form and mail to:

LCHS, PO Box 1642, League City Texas 77574

CATEGORY

- | | |
|---|-------|
| <input type="checkbox"/> Student/ Active Military | \$20 |
| <input type="checkbox"/> Senior (60 and over) | \$25 |
| <input type="checkbox"/> Senior Couple | \$35 |
| <input type="checkbox"/> Single (Individual) | \$35 |
| <input type="checkbox"/> Family | \$50 |
| <input type="checkbox"/> Supporting Patron | \$100 |
| <input type="checkbox"/> Life Membership | \$400 |

BUSINESS CATEGORY

- | | |
|---|-------|
| <input type="checkbox"/> Business Member | \$100 |
| <input type="checkbox"/> Business Partner | \$200 |
| <input type="checkbox"/> Business Leader | \$300 |

Please update your membership information here:

Name _____

(For family membership, please include names of family members)

Address: _____

City: _____ State: _____ Zip: _____

Phone: _____ Cell: _____

Email address: _____

- Check if your name, address or email has changed recently.
- Check if you would like to receive your newsletter, meeting minutes and/or meeting notices by email, to help save postage.
- Check if we may list your name and address in our membership directory. This publication will only be distributed to LCHS members and will not be used on our website.

Please Note: Membership is for one year and covers you until January 2022.